



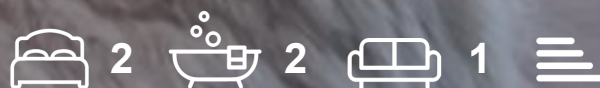
CHATTERTON | REES



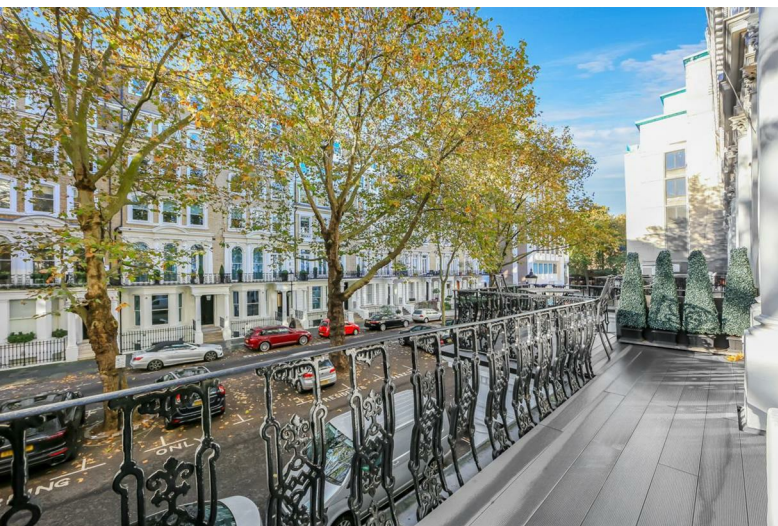
6 Beaufort Gardens

, London, SW3 1PU

Asking price £2,500,000



6 Beaufort Gardens



Description

An excellently presented two bedroom apartment, positioned over the 1st and second floors of this traditional building with a period façade. Located in a central location on a tree-lined cul-de-sac on Beaufort Gardens. With three impressive floor to ceiling windows giving that classic first floor London prestigious outlook in the living room overlooking your first floor private balcony. The flat has been designed to a high specification with bespoke finishes throughout and comprises a large living room, kitchen, two double bedrooms and two bathrooms, in addition to the impressive ceiling heights. The apartment further benefits from a lift, and wooden flooring.

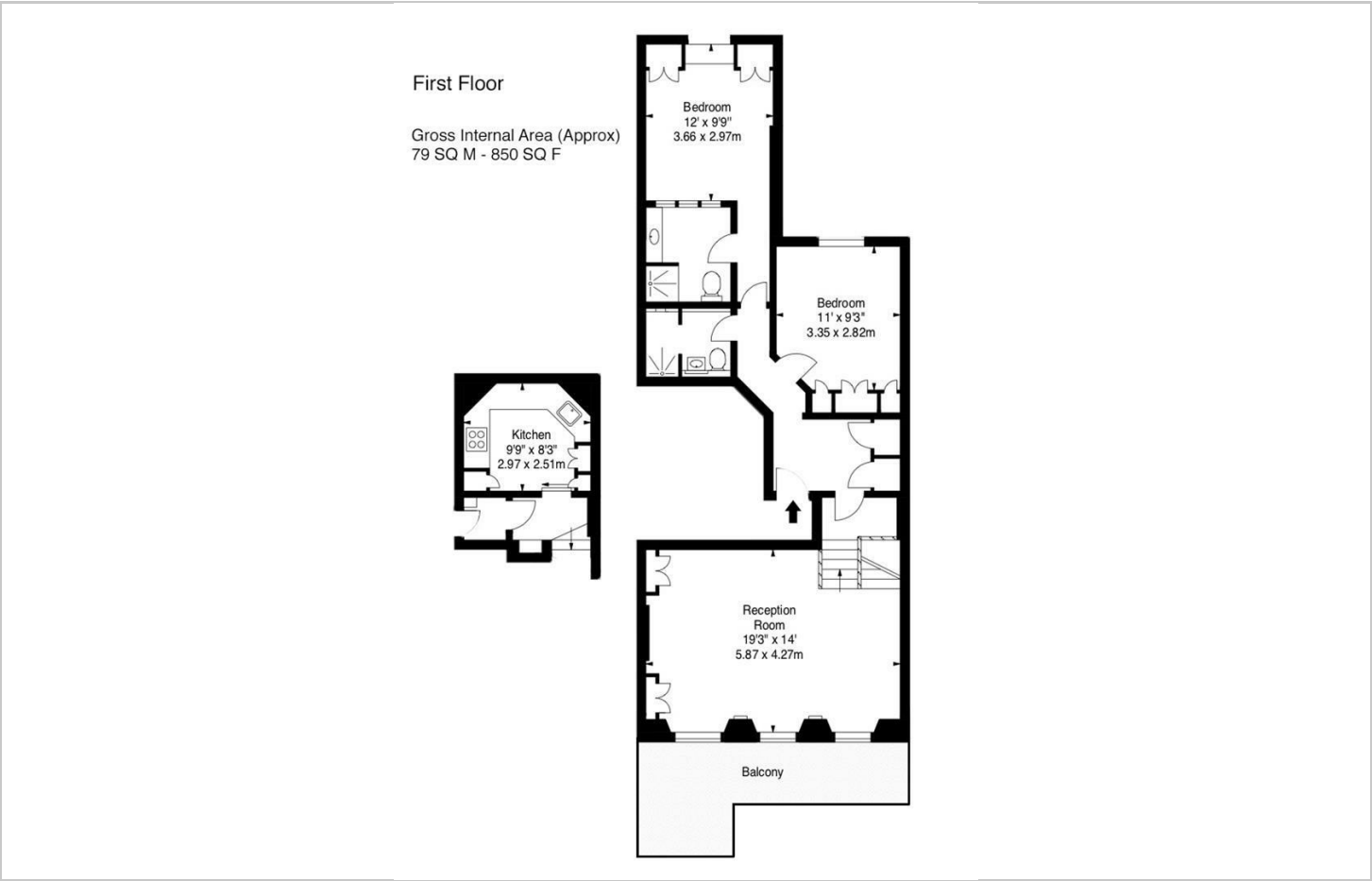
Beaufort Gardens is located in an excellent central location, combining the quietness of a tree-lined cul-de-sac with being exceptionally well placed for the various amenities of Knightsbridge, with the iconic Harrods department store a stones throw away.

- 2 Bedrooms
- Outside space
- Share of freehold
- Recently modernise
- Wooden floors
- High ceilings

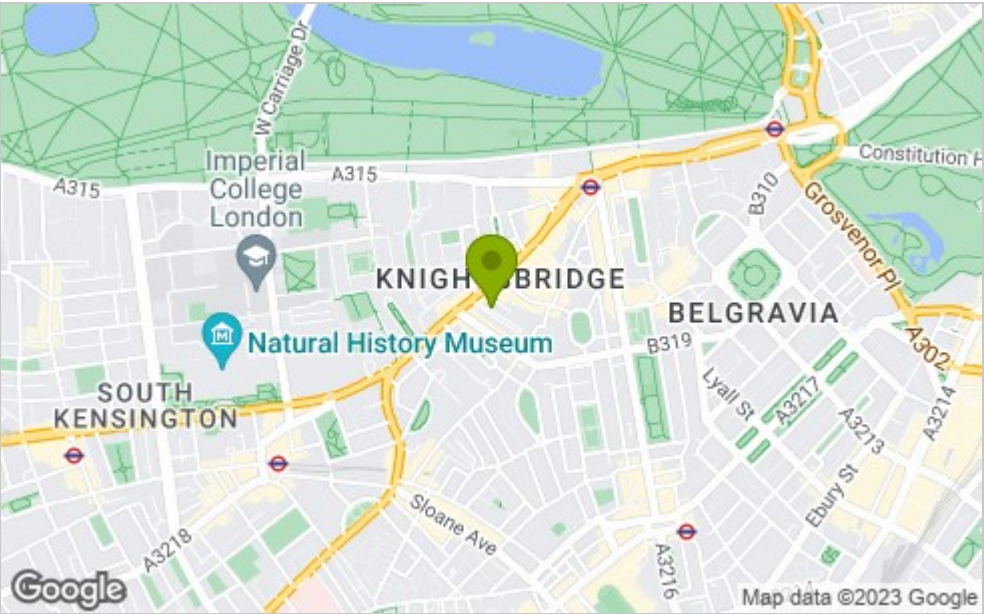




Floor Plan



Area Map



Viewing

Please contact our Chatterton Rees Office on 020 3780 0580 if you wish to arrange a viewing appointment for this property or require further information.

These particulars, whilst believed to be accurate are set out as a general outline only for guidance and do not constitute any part of an offer or contract. Intending purchasers should not rely on them as statements of representation of fact, but must satisfy themselves by inspection or otherwise as to their accuracy. No person in this firm's employment has the authority to make or give any representation or warranty in respect of the property.

Energy Efficiency Graph

